

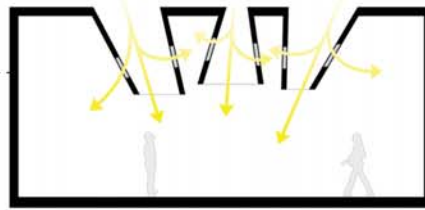
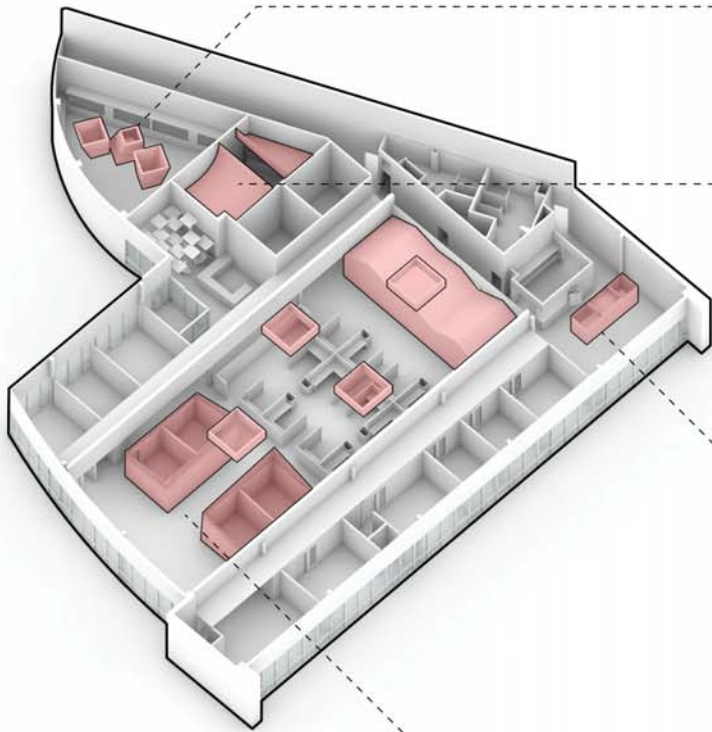
Europa Corporate

Project Size: 13,500 SF

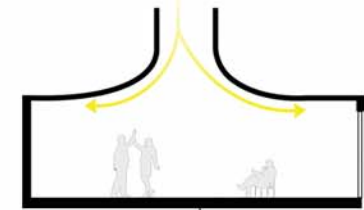
Location: Vernon Hills, Illinois

Type: Business/Commercial

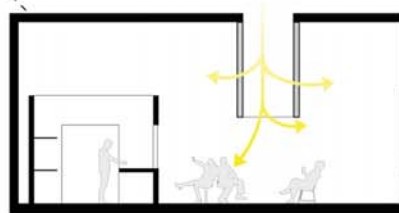
After many years of success in the eyewear industry designing and representing eyeglasses and sunglasses, clients for this project sought to expand their facility to include an attached eyewear factory to provide greater product and manufacturing flexibility. This strategic advance required a new, beautiful and expanded space. Four major program requirements directed our approach including the need for creative design spaces, public meeting and display spaces, executive offices, and product processing.



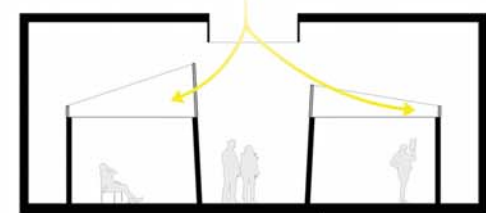
THREE LARGE SCULPTURAL FORMS EXTRUDE FROM THE CEILING TO BRING IN A COMBINATION OF DIRECT AND DIFFUSED LIGHT.



THE SOFT CURVES OF THE CEILING LET LIGHT GENTLY WASH ON THE SURFACES.



THE COLORFUL CHANDELIER ANIMATES THE ENVIRONMENT BY LETTING THE VIBRANT LIGHT DISSIPATE IN THE SPACE.



THE OFFICES GROW TOWARDS THE LIGHT WHICH ENTERS IN THROUGH THEIR TRANSLUCENT TOPS.

EUROPA INTERNATIONAL EYEWEAR FACTORY
OBJECTS IN A BOX / BOXES WITH OBJECTS

CONCEPT

Our concept centered around two basic elements of sight: visual experience and light. We sought to combine existing skylights with new ones, allowing the natural light from above to tie all spaces together. Our simple and rich material palette of wood, concrete, tile, and sisal present a tactile and visually dense experience that interacts directly with light throughout the day and seasons. Public spaces for both client and staff dance with natural light.



PHOTOGRAPHS OF EXISTING BUILDING



ABOUT US

Hammersley Architecture is a design- and service- forward architecture firm founded in 2008. With deep roots in Chicago, the firm's work for private, public and institutional clients focuses on quality design, user experience, technical quality, and code compliance. Located in the Fine Arts Building on Chicago's Michigan Avenue, Hammersley Architecture's portfolio includes a wide range of project types, from corporate interior renovations to ground-up construction; as well as a variety of project roles, from lead design architect to architect of record for the State of Illinois and the City of Chicago. Whatever the project type or need, the firm is committed to it's client's success and creating a superior built project.

Firm principal Brian Hammersley is registered in the City of Chicago as a self-certified architect, one of only 200 architects city wide who can provide local and national code compliance review for project permitting. This self-certification process circumvents the city's standard plan review, and can shorten the permitting process to as little as two to four weeks. In this capacity, Brian has worked with dozens of national and international architecture firms on large-scale projects in some of the most iconic buildings in the city to provide expert review and guidance for those seeking permits in the city. These project programs range from corporate spaces, residential projects, to manufacturing facilities, to large-scale retail stores located both in the city's central business district and the city's central shopping district on Michigan Avenue. Project sizes have ranged from 3,000 sf to 40,000 sf on multiple floors for corporate and retail clients throughout the city.

Brian Hammersley is the principal and founder of Hammersley Architecture. With more than 20 years of architectural experience, Brian leads the firm's design and research work and oversees the firm's daily operations. Raised among Frank Lloyd Wright's masterpieces in Oak Park, Illinois, Brian has been a lifelong student of the built environment and the practical and poetic relationships between architecture and well-being. Today, his work blends design sensibility, technical excellence, and client needs.

Brian has previously held adjunct teaching positions at IIT's School of Architecture and UIUC's Graduate School of Architecture; he holds a Master in Architecture from the University of Florida and a BS in Architectural Studies from the University of Illinois Urbana - Champaign School of Architecture. Brian lives with his wife and two daughters in Oak Park, Il.